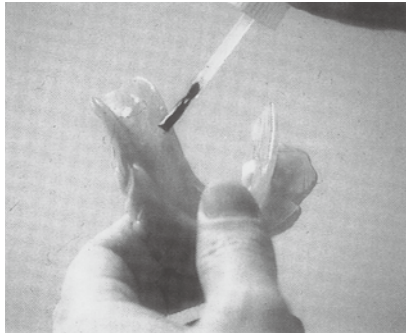


Peri-Resin II

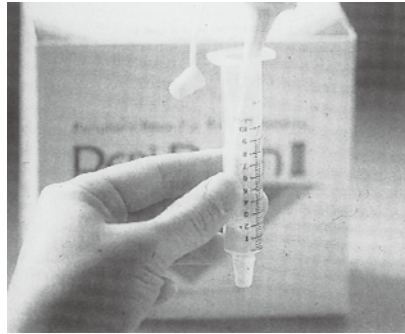
[Characteristics]

- Even in its initial stage, it is easy to spread onto the peripheral edge, and also easy to extend the denture base and also easy to seal it.
- The product does not generate heat or is not irritant, so that it can be polymerized in the mouth.

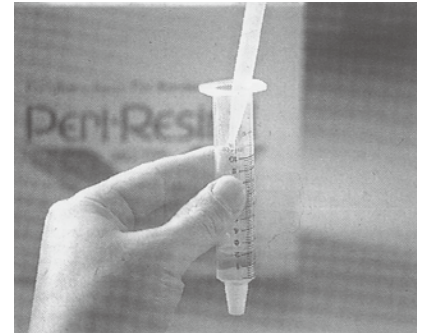
[Procedures]



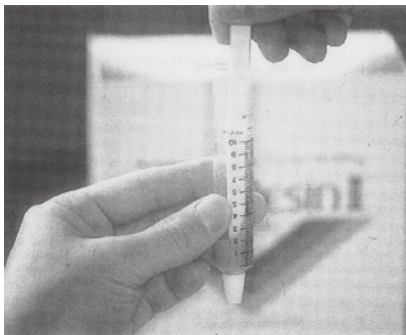
1. First remove the old mucous surface and apply a bonding material "New top coat" provided in the set on the peripheral edge in order to get a good bonding surface beforehand.



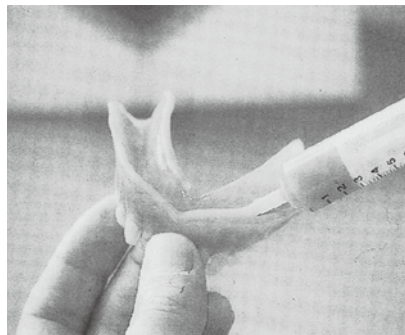
2. Powder is measured approximately up to the scale 2 of a syringe in case of a half side of an upper full denture.



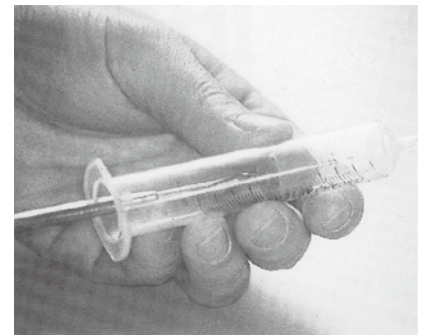
3. Standard ratio of powder to liquid is powder of scale 2 of syringe to liquid of scale 1 of pipette (2:1).



4. Mix powder and liquid using spatula for about 20 seconds until they are mixed thoroughly. Please discard the mixture remained in 5mm of the syringe tip. Start spreading the mixture onto the denture edge about 1 minute after mixing.



5. Spread the mixture onto the edge of the denture within one minute, shape it with wet fingers, then the denture is placed into the mouth. Form border for 3 minutes. Hardening starts 3 minutes later.



6. The excess material in the syringe should be taken out while it is a little soft just before hardening starts, or taken out by pushing out from nozzle tip using a thin stick.

* Bonding material "New top coat" provided in the set can be use as surface smoothing material as well.

[Contents]

Powder ····70g	Pipette ····· 1
Liquid ·····50mL	Spatula ····· 1
New top coat···6mL	Syringe ····· 2



KAMEMIZU CHEM.IND.CO.,LTD.

Address:17-16 TOYOSATO-CHO, NEYAGAWA, OSAKA 572-0071, JAPAN
 TEL +81-72-826-7720 FAX +81-72-826-1299
 E-mail : info@kamemizu.co.jp URL : http://kamemizu.co.jp



20300BZZ01234A01

Resin for peripheral sealing and extension of denture

Peri - Resin II

INSTRUCTIONS FOR USE

I. INTRODUCTION

Peri-Resin II is a resin for peripheral sealing of denture base, and extension of denture borders.

II. INDICATIONS

It is used to improve stability of dentures.

III. CONTRAINDICATION

It should not be used with those patients who had allergic reactions including rash, skin inflammation to methyl methacrylate polymer, methyl methacrylate monomer or organic solvents in the past.

IV. POSSIBLE SIDE EFFECT

While it is used, allergic reactions including redness, sore, blister, swelling may occur.

V. INCOMPATIBILITIES

Do not use metal plates.

VI. PRECAUTIONS

1. Safety precautions

1. If allergic reactions including rash, eczema, redness, tumor, swelling, itch, eruption, numbness occur to a patient due to using the material, stop using it immediately and let the patient call a doctor, or call a doctor in case of a dentist or a medical staff suffered.
2. When using the material, take care sufficiently so as not to contact with eyes, skin, or clothing by wearing medical gloves and safety glasses. Although medical gloves (for dentistry) prevent it from contacting with hands directly, as it is known, organic solvents or monomers penetrate them in a short time. So, if the liquid, the powder, the mixture, or the bonding material sticks to gloves, throw them away immediately, and rinse hands thoroughly with running water with soap.
3. Take sufficient precautions so that the material will not contact with patient's eyes, skin, or clothing. In addition, try not to let it stick to any other parts of mucous in the mouth as much as possible than the part that it should be applied.
4. If it contacts with patient's eyes, rinse them with plenty of running water immediately, and let him call an eye doctor, or call an eye doctor in case of a dentist or a medical staff suffered.
5. If excess resin flows into the respiratory tract or the esophagus, let a patient call a medical specialist and have a treatment.
6. After having finished treatment in the mouth, immediately clean the mouth sufficiently (let a patient rinse the mouth

thoroughly). And if the material sticks to the skin, rinse with plenty of running water with soap. If it sticks to clothing, immediately wipe it off with alcohol (with cotton ball) thoroughly.

2. Handling and manipulation precautions

1. When a mucous membrane becomes inflamed or there is a big difference in the distribution of bite pressure against the mucous beneath the denture base, the mucous membrane needs treatment before hand.
2. As the liquid is inflammable, it should not be used or placed near the fire. And if it is spilt on the table or the floor, wipe it immediately with dry cloth.
3. It should be used in the place where the ventilation is appropriate (several ventilation per hour).
4. When polymerized denture is ground or polished, use a local ventilation or dust mask approved by public organizations not to inhale fine particles.
5. In order to prevent infection, syringes and spatulas should be cleaned, and sterilized with alcohol after use.
6. It should not be used together with other products.
7. It should not be used in any ways other than resin for denture base repair.
8. It should not be used by any person other than qualified dentists.

3. Storage precautions

1. The material should be stored to avoid fire, high temperature, high humidity and direct sunlight, at 0°C to 23°C.
2. The ingredient of liquid material may separate into two layers at very low temperature (0°C = 32°F or less). In such a case, please stir strongly after warming to room temperature. By using only supernatant fluid, it does not function properly.
3. It should not be stored in a large quantity in the same storage. A fire extinguisher should be installed in the place where it is used and the storage.
4. As for both the powder and the liquid, lids of the containers should be tightened firmly.
5. While it is not used for a long period of time, or stored laying them on their side, store it with both a lid and an inner stopper tightened. (Do not throw away the inner stopper and keep it for storage.)
6. The material should be properly stored and controlled, and not be touched by any person other than people engage in dentistry

VII. COMPONENTS

1. Powder 70g
Poly(ethyl methacrylate), coloring agent, and others
2. Liquid 50mL
TMPTMA, and others
3. New top coat 6mL
Ethyl acetate, and others
4. Accessories

Dropper, Spatula, Steeple-crowned cap, Syringe (2), Slender stick

VIII. CLINICAL PROCEDURES

1. Remove an old resin surface of a peripheral edge of a denture base to obtain a new surface, and rinse with water and dry it.
2. Apply a bonding material "New soft coat" to the peripheral edge of the denture base.
3. In case of a half side of an upper jaw of full denture, put the powder up to the scale 2 (about 1.7g) of the syringe with a cap.
4. Put the liquid, adjusting to the scale 1 (about 1 mL) of a dropper into the syringe, and mix quickly for 15 to 20 seconds with a spatula. Dispose the mixture filled in the tip of the syringe as the part may not be mixed well.
5. Leave the mixture for about 1 minute, then spread it onto the peripheral edge of the denture base, and shape it roughly with wet fingers.
6. Put it in the mouth for occlusion (possible occlusion time is for about 3 minutes)
7. Take out the denture about 6 minutes after sitting it in the mouth.
8. Apply "New top coat" to the denture surface and the denture base border area thoroughly.

[CAUTION]

1. The excess material in the syringe should be taken out while it is still soft just before hardening start, or taken out by pushing out from nozzle tip using a thin stick.
2. When the material is taken out from the container, use it immediately, and the container of the liquid should be tightened its lid firmly after use.

[WARRANTY]

KAMEMIZU CHEMICAL IND.CO., LTD. will replace any product that is proved to be defective. KAMEMIZU CHEMICAL IND.CO., LTD. does not accept liability for any loss or damage, direct, consequential or special, arising out of the application or use of or the inability to use these products. Before using, the user shall determine the suitability of the products for the intended use and the user assumes all risk and liability whatsoever in connection therewith.



KAMEMIZU CHEMICAL IND.CO.,LTD.
17-16 TOYOSATO-CHO, NEYAGAWA,
OSAKA 572-0071, JAPAN
http://kamemizu.co.jp/e_kamemizu



Emergo Europe
Molenstraat 15
2513 BH The Hague
The Netherlands